



# Nature Classrooms Pedagogy

In today's changing world, learners often view nature as unfamiliar and distant from their lives. Through our Nature Learning Pedagogy, we aim to provide opportunities for learners to develop wonder, love, and a connection to nature at a young age. Our approach to Nature Learning and Resource creation is shaped by this pedagogy. It is a dynamic and collaborative approach based on classroom observations and conversations with in-service teachers and experienced educators. We envision Nature Learning to be:

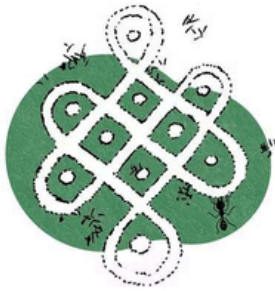
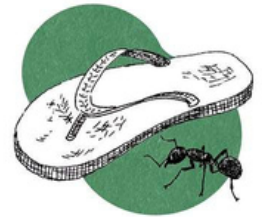


## **Nature-Centric**

Shifting from a utilitarian, human-centric perspective of nature to one that views humans, along with other beings as a part of the natural world.

## **Contextual**

Drawing upon familiar, local and relatable examples to encourage students to bond with their immediate environment. Contextual learning progresses from the familiar to the unfamiliar, local to global concepts and examples.



## **Culturally Relevant**

Acknowledging and providing opportunities to include and discuss diverse local cultural practices, beliefs and anecdotes in the form of stories, poems, songs, art and more within classroom learning.

## **Age-Appropriate**

Carefully designed lessons and resources in accordance to children's learning levels, cognitive skills and socio-emotional needs.



## **Learner-Centric**

Allowing for learners to engage, explore and make choices about their learning and interactions in and about the natural world.



## **Experiential**

Immersive and reflective learning through the hands, head and heart.



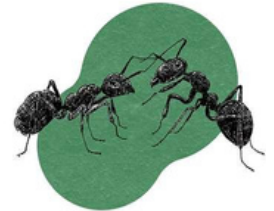
## **Inquiry Based**

Sparking students' curiosity about the natural world and their surroundings by asking questions, encouraging observation and investigation.



## **Empathetic**

Building and valuing emotional connections, and a compassionate outlook towards the natural world.



## **Inclusive & Accessible**

Representative and non-discriminatory teaching and learning.



## **Well-Being Focussed**

Creating a sense of wonder and love for nature and facilitating deep bonds and connections with the natural world. Addressing topics that may cause anxiety in students (for example, plastic pollution or climate change) with empathy.

