



Instructions for Use:

Use this teaching-learning resource to introduce children and adults to the fascinating world of **Fig Trees and Fig Wasps**, using illustrations, and a short story that can be read aloud.

Suggested print and use instructions:

Print this resource on A4 sheets, back-to-back starting from page number 1. It has been designed for the text to be on one side, and the illustration on the other. While using this resource hold the printed sheet up (from page number 1 onwards), to show your audience the illustrations, while you read aloud the text.



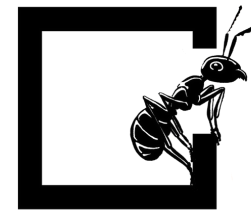
The Wonderful Story of the

Fig Tree & Fig Wasp

Content: **Nature Classrooms**

Design: **Manini Bansal**

Illustrations: **Ravi Jambhekar, Canva**



Nature Classrooms

Connecting Learning to the Natural World

This work is licensed to Nature Classrooms under CC BY-SA 4.0.

We are lucky to have so many different types of **Fig Trees** growing all around us. Have you seen different fig trees like The Banyan Tree, The Peepal Tree, The Cluster Fig Tree and The Rubber Tree? There are hundreds of types of Fig Trees!

The **Fig** is a special kind of fruit- it is a collection of many flowers and seeds inside a single fleshy structure.

Fig Wasps are tiny flying insects - as small as a grain of sand! They have a unique and special relationship with Fig Trees.

Listen carefully to the story of this friendship. A friendship that is so special that they need each other to live, reproduce and survive!



The Wonderful Story of the

Fig Tree & Fig Wasp



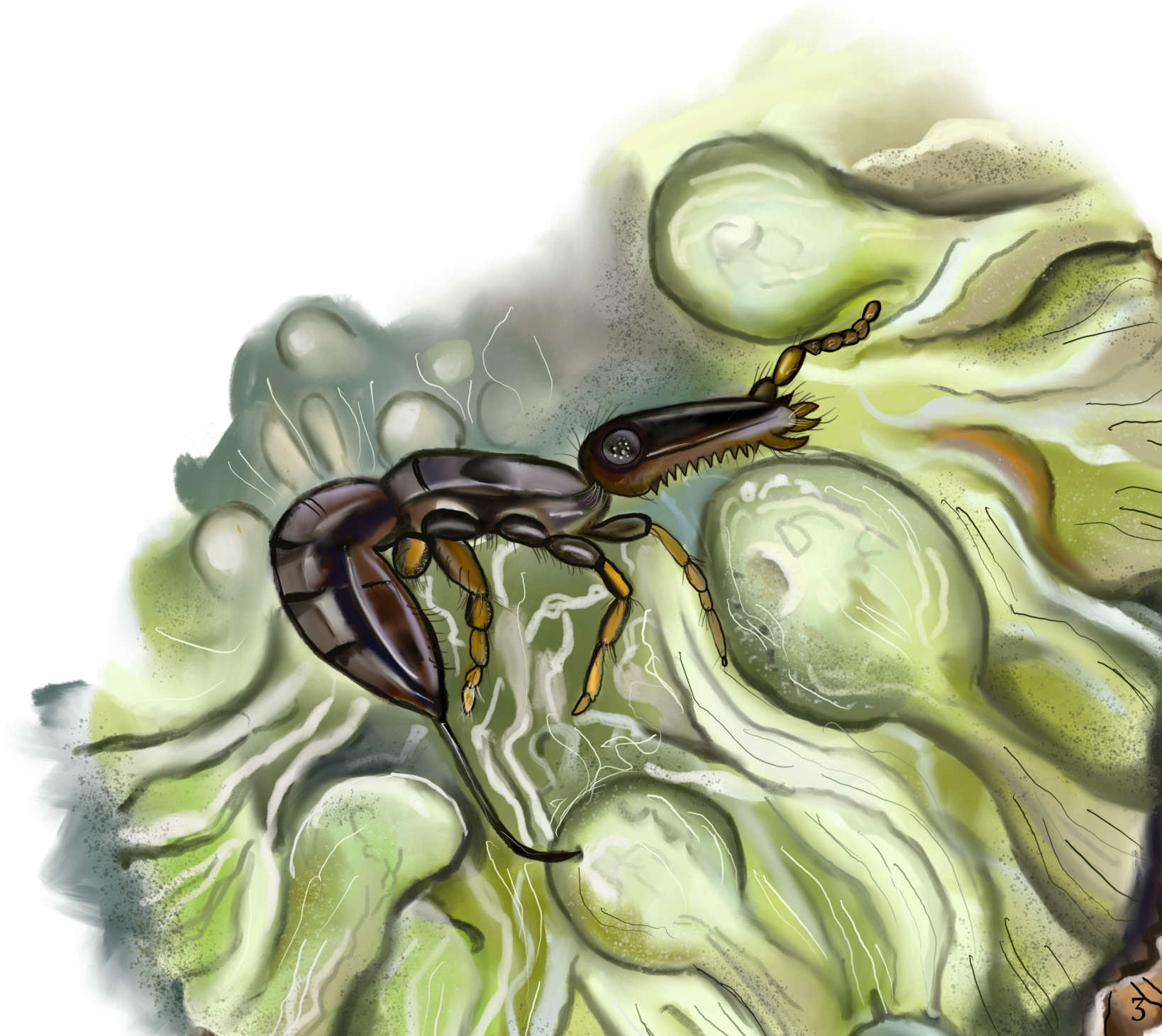
Nature Classrooms
Connecting Learning to the Natural World

A female fig wasp carrying pollen, flies towards an unripe fig on the fig tree.

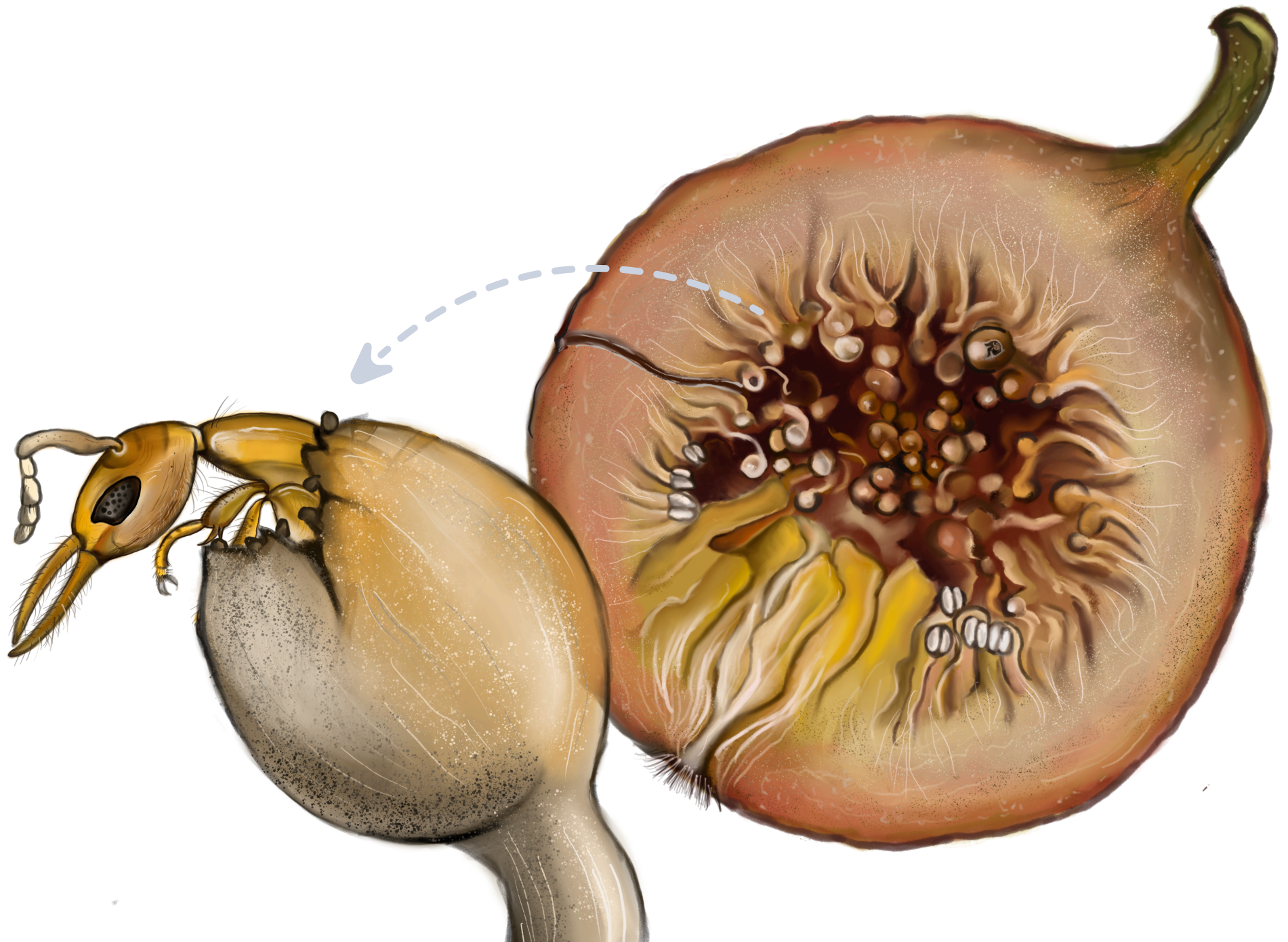
The unique scent of this fig attracts the wasp, signalling her to enter through a tiny opening. Inside the fig are hundreds of tiny male and female flowers.



The female wasp loses her wings when entering the fig. She lays her eggs inside the fig and sheds pollen to pollinate the female flowers.
She then dies inside the fig.



The pollinated flowers become seeds.
Wingless male wasps and winged female wasps
emerge from the eggs. The male wasp mates with the
female, then digs an escape tunnel for her.
He dies within the fig after doing this.



The mated female collects pollen from the male flowers inside, and then flies out through the escape tunnel.

She flies in search of another fig tree with unripe figs in which to lay her eggs - she dies within the fruit soon after.

And the cycle continues...



Many birds and mammals love to feed on the
mature juicy fig fruits.
After they feed, they move and fly far and wide,
dispersing the fig seeds.

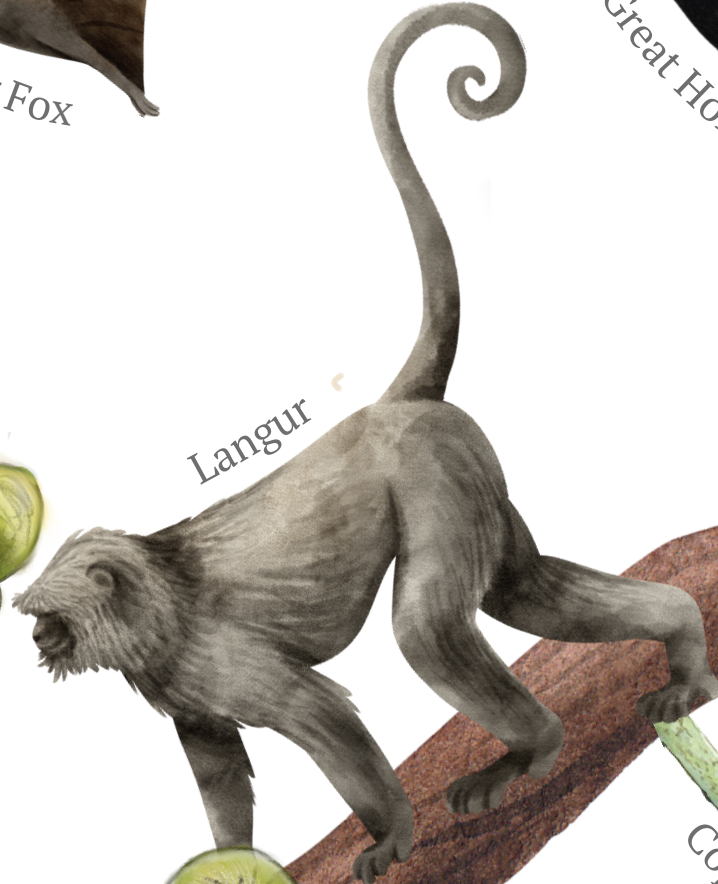
Each species of fig tree is pollinated by only one or
a few species of fig wasps - both cannot complete
their life cycles without the other!



Flying Fox



Great Hornbill



Langur



Coppersmith Barbet